

Research team makes discoveries advancing epilepsy

Posted **Yesterday**

+ Share

A team of Florida State University College of Medicine researchers has found a link between a specific protein in the brain and increased vulnerability to neurodegeneration for individuals with temporal lobe **epilepsy (TLE).**



Professor of Biomedical Sciences Sanjay Kumar, who led a study that found a link between a specific protein in the brain and increased vulnerability to neurodegeneration for individuals with temporal lobe epilepsy.

Image credit: Florida State University

Their findings are published in the [Journal of Neurophysiology](#).

TLE is the most common form of epilepsy in adults and is often resistant to medication. Professor of Biomedical Sciences Sanjay Kumar, who led the study, said the team used a novel technique that made it possible to study small amounts of tissue from hard-to-reach regions within the brain. Kumar, FSU researcher Stephen Beesley and former doctoral student Thomas Sullenberger focused on a chemical messenger called glutamate and one of its receptors, N-methyl-D-aspartate (NMDA).

The team discovered that although two proteins commonly associated with NMDA — GluN1 and GluN2 — were evenly distributed in a critical hippocampal region of the brain, a third one — GluN3 — was distributed on a gradient. A pattern of neuron loss in the hippocampal and para-hippocampal regions of the brain is a hallmark feature of TLE.

“The relationship between GluN3 and cell loss was not known until this research,” Kumar said. “This advance in cellular biology is an important step for developing therapies to help patients.”

Because GluN3 makes neurons more susceptible to calcium-induced cellular damage, the discovery helps researchers narrow the focus to identify exactly where neurons are dying and in how large an area.

Kumar has applied to patent the novel technique, known as area-specific tissue analysis (ASTA), that he developed. ASTA's added precision created an improved method of testing for both the presence and volume of specific proteins linked to TLE.

Ultimately, Kumar said, discovering the gradient distribution of GluN3 will allow researchers to access more relevant tissue samples.

“This research shows how area-specific tissue analysis can be a useful tool,” he said. “I’m excited to explore what further research with this technique can uncover.”

The Kumar Lab focuses on deciphering the basic mechanisms underlying TLE, as well as identifying and isolating vulnerable cells and circuits within the hippocampal region to promote the discovery of more effective therapies and interventions.

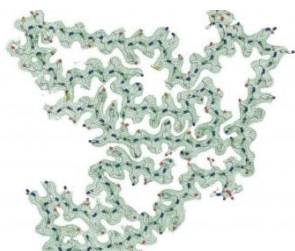
Source: [Florida State University](#)

RELATED LINKS:

You can [offer your link](#) to a page which is relevant to the topic of this post.

How Technological Developments are Changing How Professionals and Amateurs Invest
[Featured Post](#)

RELATED POSTS:



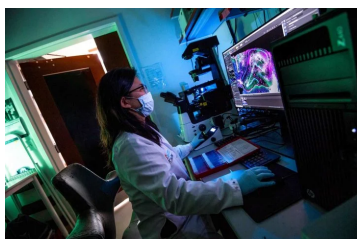
Study Suggests Possible Common Thread Between Many Neurodegenerative Diseases

March 7, 2022



Activating STING Could Make Brain Tumors More Susceptible to Treatment

July 13, 2022



Breaking Through to the Brain

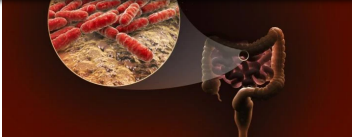
May 8, 2022



Study reveals structure of anti-tumor therapy's target

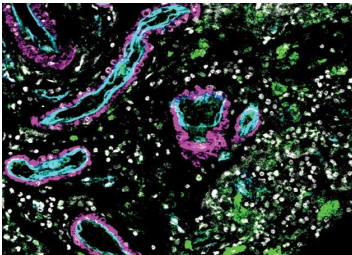
March 26, 2022

Bacteria and their Bearing on Bowels and Brain



Scientists discover genetic variants that speed up and slow down brain aging

April 6, 2022



Newly Discovered Immune Cells Play a Role in Hemorrhagic Stroke

January 30, 2022



Researchers Identify New Genetic Cause of a Form of Inherited Neuropathy

August 13, 2020



Genetically Informed Atlases Reveal New Landscapes in Brain Structure

February 9, 2022

Molecular Details Reveal New Clues about Common Brain Tumor

February 12, 2021



RELATED TOPICS:

[epilepsy \(194\)](#)

[glutamate \(21\)](#)

[neurodegeneration \(53\)](#)

LATEST NEWS

Evidence that buckyballs and carbon nanotubes form the dust and gas of dying stars

[Today](#)

Borrowed gene helps maize adapt to high elevations, cold temperatures

[Today](#)

Mobile app helps detect skin cancer in older patients

[Today](#)

An engineer uses an ancient art to solve a very modern problem

[Today](#)

Abortion Ban May Mean Denial of Effective Drugs for Women with MS, Migraine, Epilepsy

[Today](#)

SELECTED TOPICS

[Aging research](#)

[Artificial intelligence](#)

[Biometrics](#)

[Brain-computer interfaces](#)

[Quantum computing](#)

[Robotics](#)

FEATURED VIDEO [\(see all\)](#)



Helihome: The Insane 1970's Flying Camper (Video)

You can convert an old helicopter into a camper. But here's another concept which is entirely on another...

Imaging

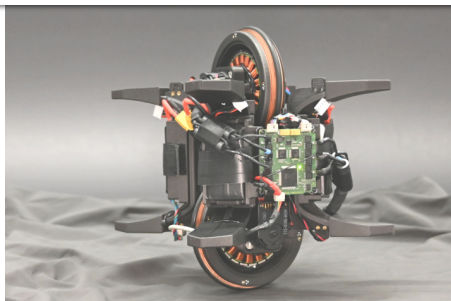
Today 

Building a Better Painkiller

Today

How the intestine replaces
and repairs itself

Today

[More Latest News >](#)

The Wheelbot: A Jumping Reaction Wheel Unicycle

Recent advance in the development of actuators, sensors, and embedded controllers provides new possibilities for robotics. A recent...