

# FSU and TMH break ground on their shared healthcare center and hospital near Panama City Beach

WFSU | By [Lynn Hatter](#)

Published January 19, 2023 at 1:05 PM EST



Staff / Florida State University

Florida State University and Tallahassee Memorial Hospital have moved forward in a big way by breaking ground on their shared medical campus in Panama City Beach. The project is part of FSU's long-term goal of climbing higher in national rankings and will also serve a massive retirement community that just completed its 1,000th home.

Looking for MORE trusted news? [Subscribe to WFSU's Daily News](#) to receive all the day's stories right in your inbox. Don't miss a beat!

One of the areas FSU has identified as a weakness is its federal health funding. The school has made it a priority to get more money for health-related research from the National Institutes of Health. Why the emphasis? Research funding is one of many metrics used to determine national rankings, and it’s also something on the state’s radar as state colleges and universities vie for additional funding from the legislature.

“We see this transformational for our university, for building transformational healthcare, but also healthcare technology and research that will make a difference in the future,” said FSU President Richard McCullough during a groundbreaking ceremony for the site.

During McCullough’s hiring process, the medical campus was top-of-mind for many presidential search committee members, as was the need to grow the school’s healthcare research.

The new medical campus will feature specialty practices, and a 100-bed hospital, where FSU medical students can train and be overseen by Tallahassee Memorial Hospital physicians. The Port St. Joe Land Company is developing the retirement community. It benefits from the partnership by having a local medical practice to serve the needs of the 55-and-over residents who will be moving to its massive Margaritaville-branded retirement village.

**Tags**

- WFSU Local News
- education
- Florida State University
- Tallahassee Memorial Hospital
- Healthcare



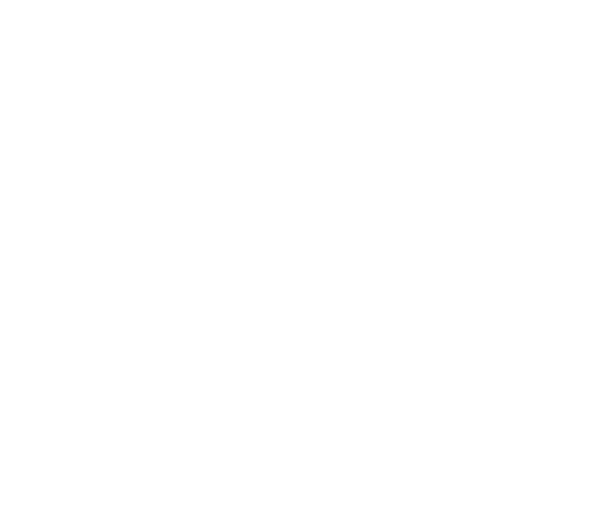
**Lynn Hatter**

[Follow @HatterLynn](#)

Lynn Hatter is a Florida A&M University graduate with a bachelor’s degree in journalism. Lynn has served as reporter/producer for WFSU since 2007 with education and health care issues as her key coverage areas. She is an award-

Find [complete bio, contact info, and more stories](#) here.

[See stories by Lynn Hatter](#)



## Latest Stories



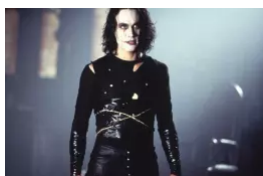
**All NPR News**

Germany is facing growing pressure to send Leopard tanks to Ukraine



**All NPR News**

Google is cutting 12,000 jobs, as tech industry layoffs widen



**All NPR News**

Actor Brandon Lee was killed by a prop gun, years before the 'Rust' shooting death

**All NPR News**

As the pandemic enters its 4th year, there's still much to learn about long COVID

---

**From WFSU-TV**

---

Welcome Liesel Hamilton to the WFSU Ecology Blog!

---

My Year in Bugs: the 2022 Backyard Blog

---

Local Routes: Honoring & Remembering Veterans (Episode 705)

---

Timberlane Ravine: learn to love dead trees (and trillium!)

---

### WFSU News Comment Policy

We welcome relevant comments. Off-topic comments or those using foul language may be removed.

Please read our Comment Policy before commenting.

Got it

0 Comments

 Login ▼

G

Start the discussion...

LOG IN WITH

OR SIGN UP WITH DISQUS 

Name

Share

Best Newest Oldest

Be the first to comment.

Subscribe

Privacy

Do Not Sell My Data

Stay Connected

© 2023 WFSU Public Media

About Us

Work at WFSU

WFSU  
Morning Edition

[Contact Us](#)

[Privacy Policy](#)

[Public Files](#)

[Commenting Policy](#)



WFSU

NEWS